



**ST.ANN'S COLLEGE FOR WOMEN**  
(Affiliated to Acharya Nagarjuna University,  
Recognised under 2(f) UGC Act 1956, New Delhi)  
**AMARAVATHI ROAD, GORANTLA, GUNTUR – 522034, A. P**

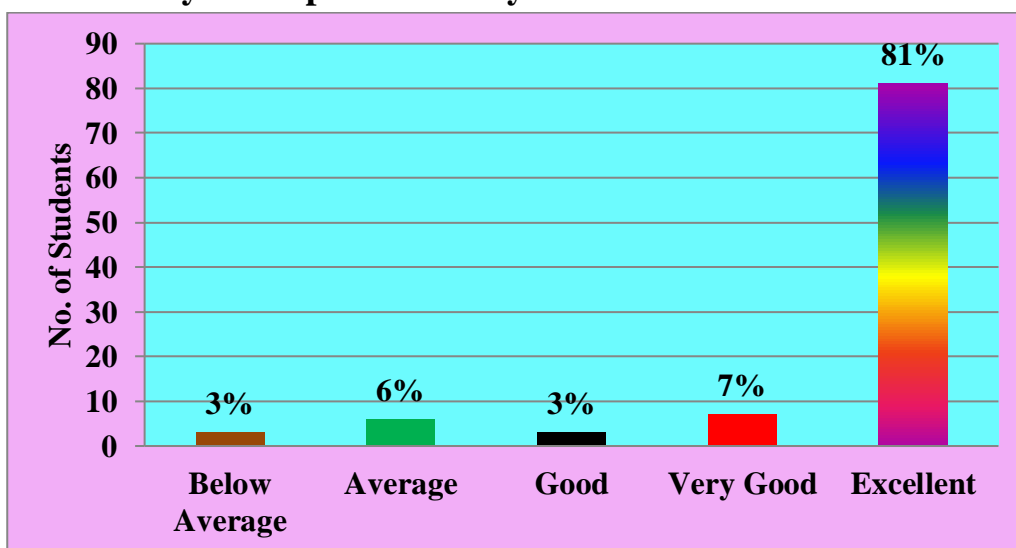
Email: [st\\_anns\\_coll@yahoo.co.in](mailto:st_anns_coll@yahoo.co.in)

Website: [www.stannscollegeforwomen.org](http://www.stannscollegeforwomen.org)

## Students Feedback Analysis & Action Taken on the Academic Performance and Ambience of the Institution

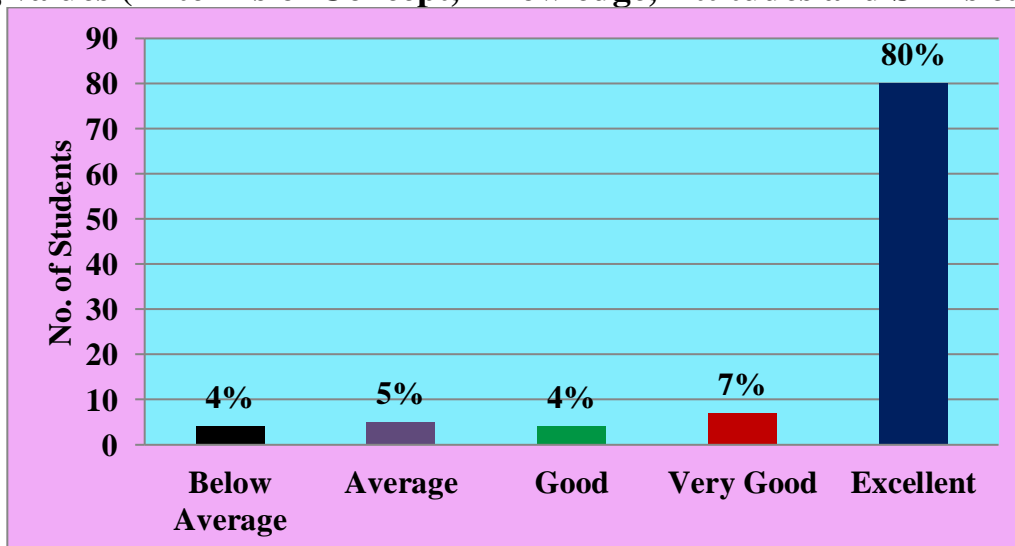
### FEEDBACK ANALYSIS :: 2020-2021

#### 1. Effects to effectively cover prescribed Syllabus.



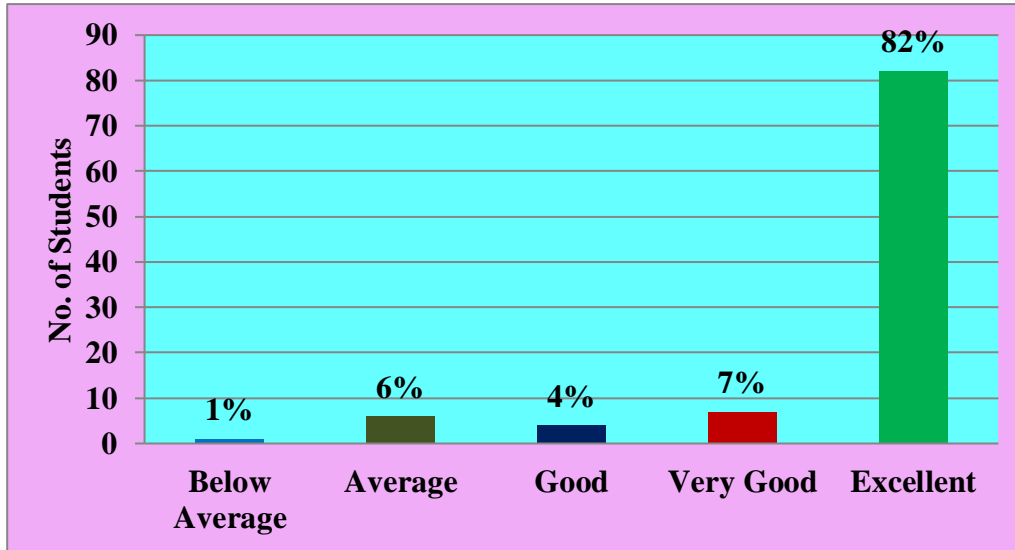
High percentage of students i.e; 81% rated excellent that the teachers complete the syllabus within time and are sensitive to the needs of the students.

#### 2. Learning values (In terms of Concept, Knowledge, Attitudes and Skills etc.)



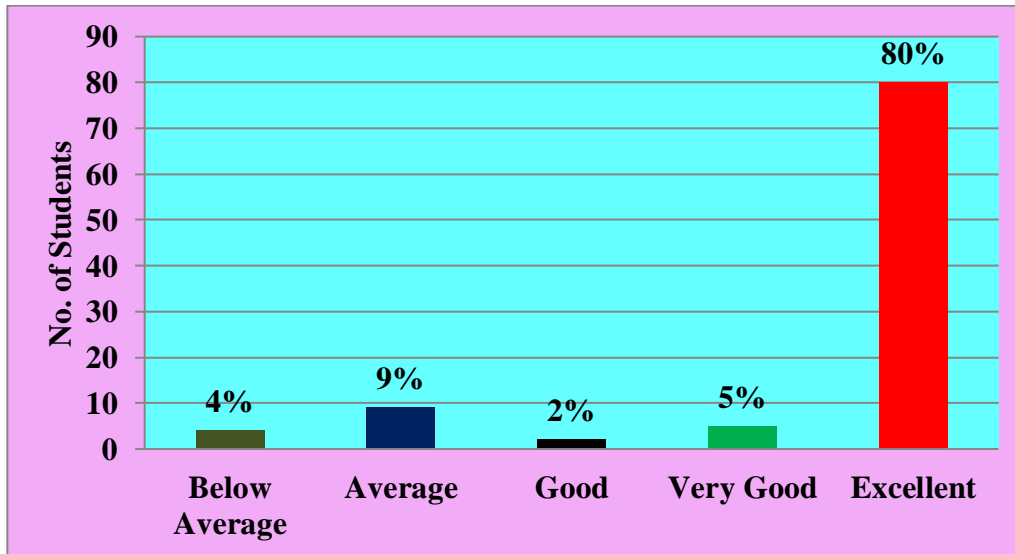
Majority of the students i.e; 80% rated excellent that the teachers have good subject knowledge and teaching all the learning values like concept development, knowledge, understanding, attitudes and skills etc.

**3. Rate the flexibility in choosing of elective relation to technology advancement.**



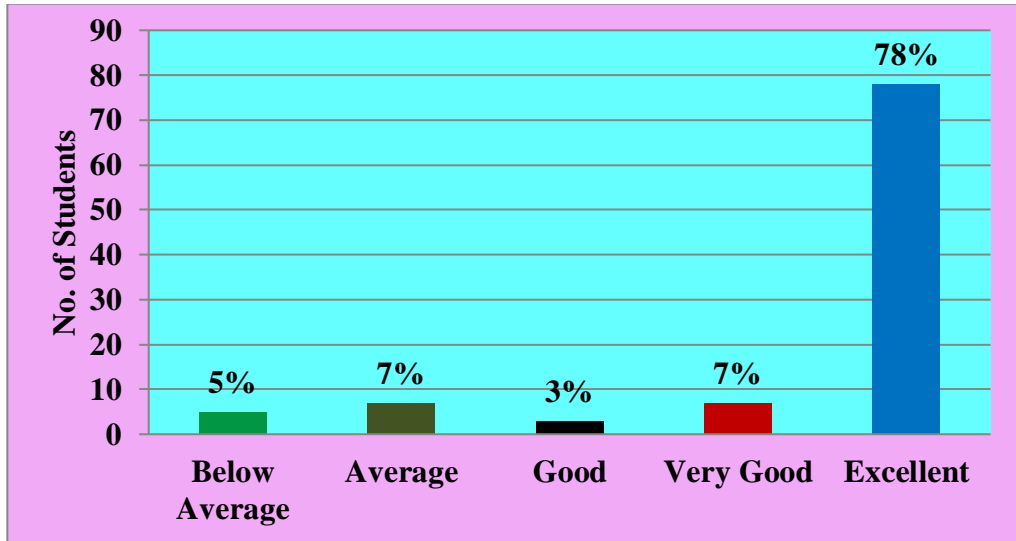
Most of the students i.e; 82% rated excellent that there is flexibility in choosing of elective relation to technology advancement.

**4. Rate the depth of syllabus of the course in relation to the competencies expected by industry/current global scenario.**



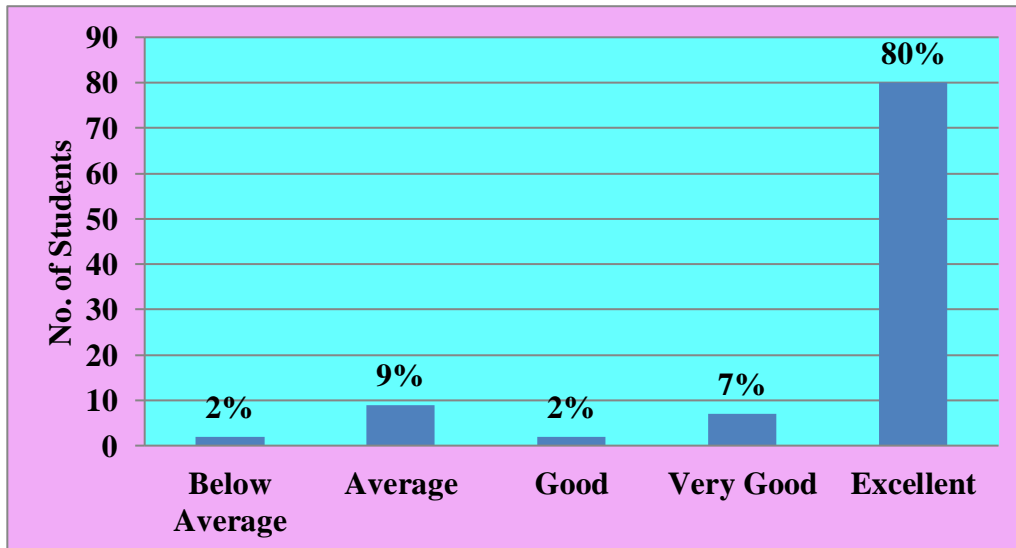
80% of the students rated excellent that the depth of the syllabus of the course in relation to the competencies expected by industry current global scenario.

## 5. Opportunity to participate in seminar/workshop/conferences/research projects.



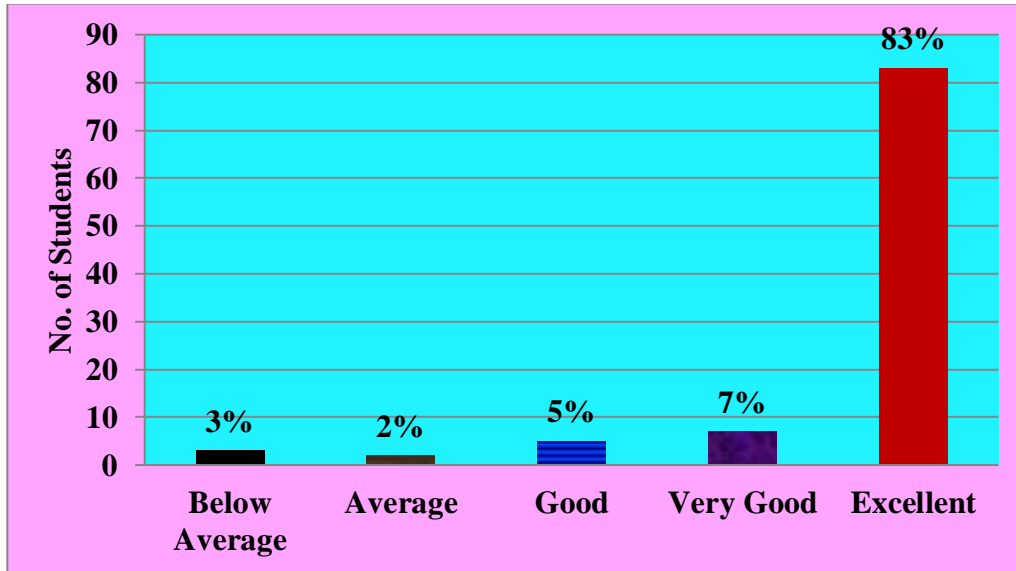
High percentage of Students i.e;78% positively responded that Teachers encourage them to participate and involve in seminars/workshops/conferences and research projects is excellent.

## 6. Library ambience is good for informal and Self-learning.



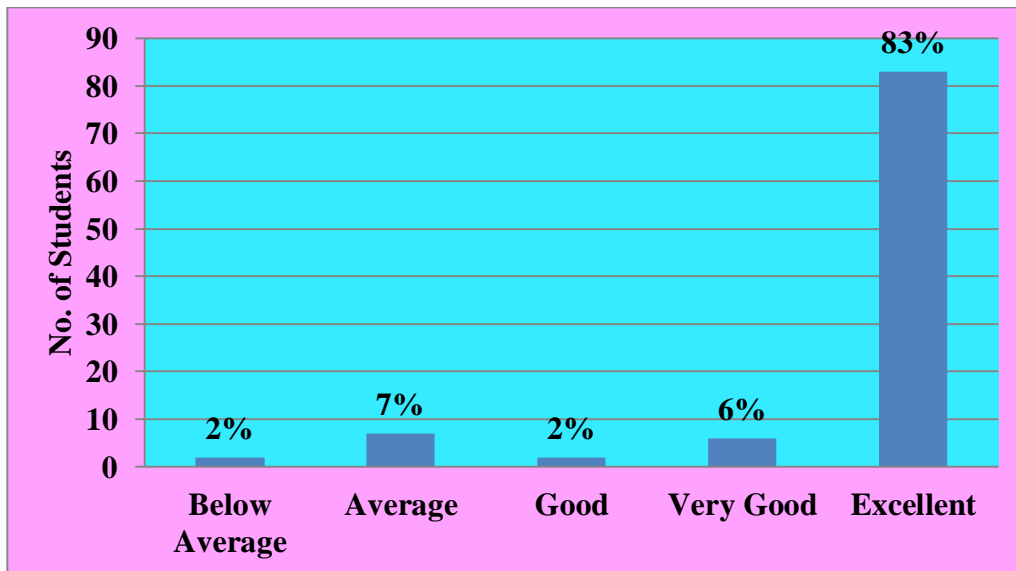
. An excellent percentage of students i.e; 80% responded that the library ambience is good for informal and self learning

## 7. Sports and Games Facilities



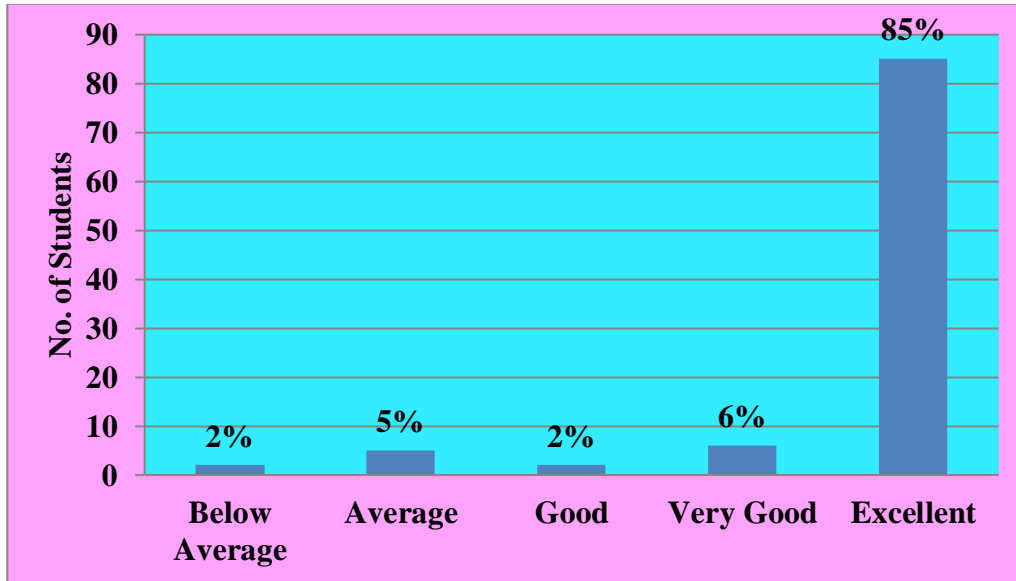
83% of students strongly agreed that the sports and games facilities are excellent.

## 8. Internal Examination Evaluation and Assessment Process



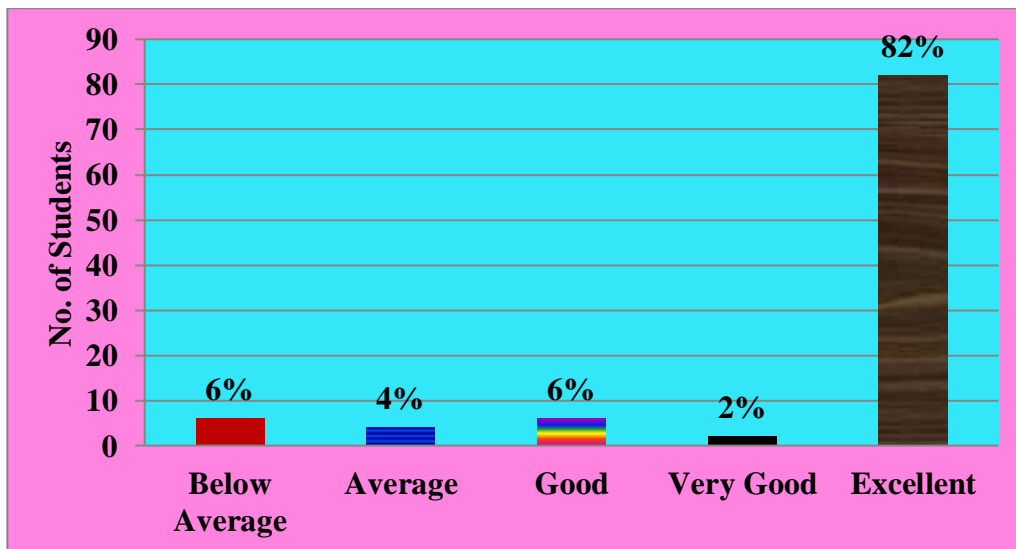
Majority of the students i.e; 83% rated excellent that evaluation process is fair and unbiased they expressed support for the continuous internal assessment (CIA) being followed by the University.

## 9. Training and Placement Cell



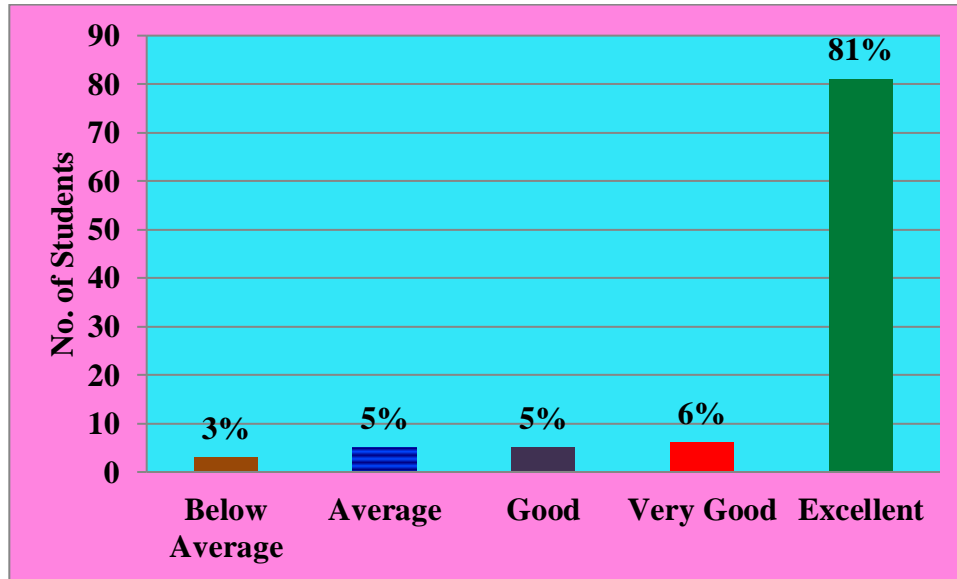
High percentage of students i.e; 85% were rated excellent with the training and placement cell support in pursuing jobs while they are studying.

## 10. How is the standard of education and general ambience in the College?



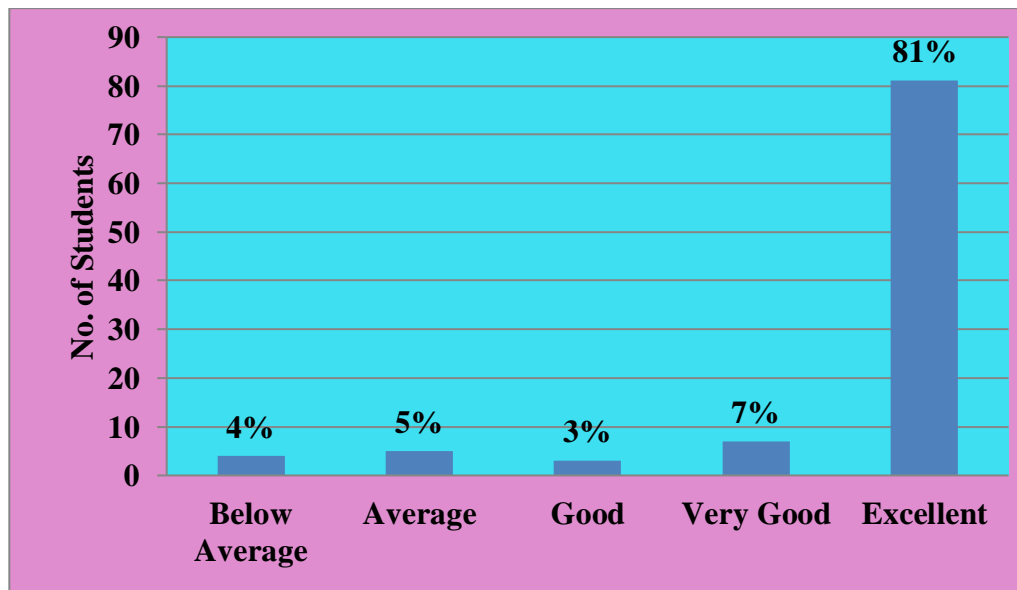
Majority of the students i.e; 82% of students agreed that the educational standards and general ambience were excellent.

### 11. Amenities and assistance available at the college for Curricular, Co- Curricular and Extra-curricular activities?



.81% of the students strongly agreed that the college had good amenities and giving assistance to participate in all types of activities are excellent.

### 12. Overall Opinion about the College.



Around 81% of the students rated excellent about the curriculum followed by the college which is issued by the university.



**ST.ANN'S COLLEGE FOR WOMEN**  
(Affiliated to Acharya Nagarjuna University,  
Recognised under 2(f) UGC Act 1956, New Delhi)  
**AMARAVATHI ROAD, GORANTLA, GUNTUR – 522034, A. P**

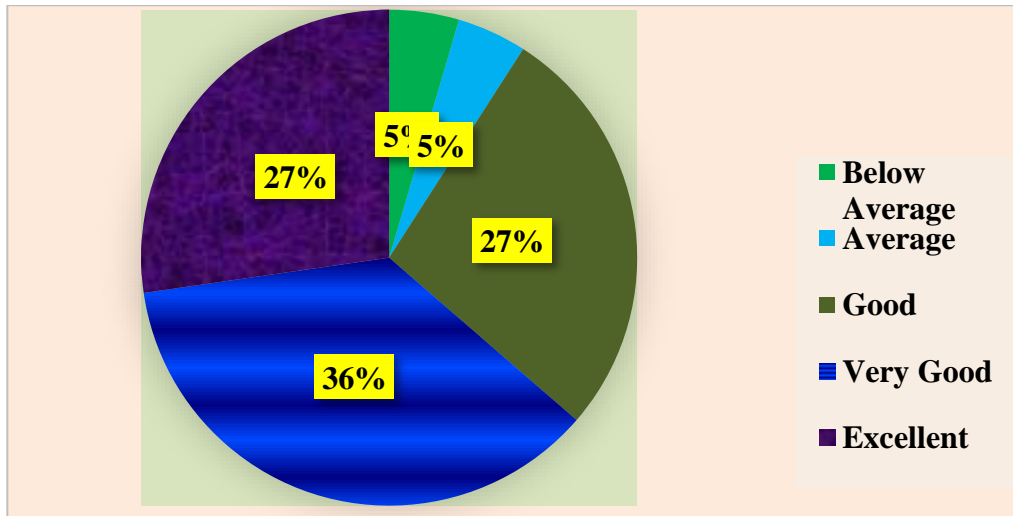
Email: [st\\_anns\\_coll@yahoo.co.in](mailto:st_anns_coll@yahoo.co.in)

Website: [www.stannscollegeforwomen.org](http://www.stannscollegeforwomen.org)

## Teachers Feedback Analysis & Action Taken on the Academic Performance and Ambience of the Institution

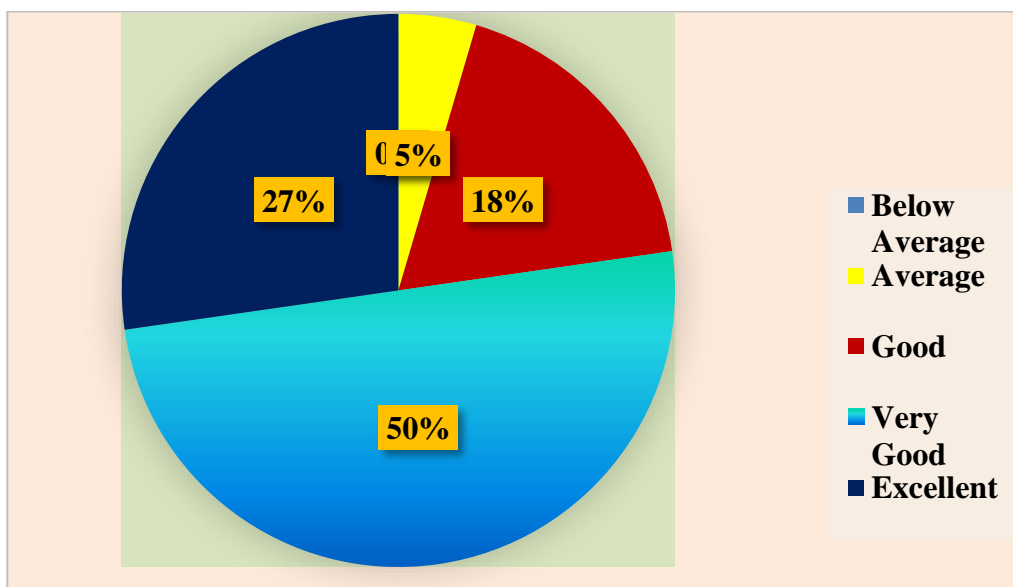
### FEEDBACK ANALYSIS :: 2020-2021

#### 1. How do you feel about the structure and relevance of the curriculum.



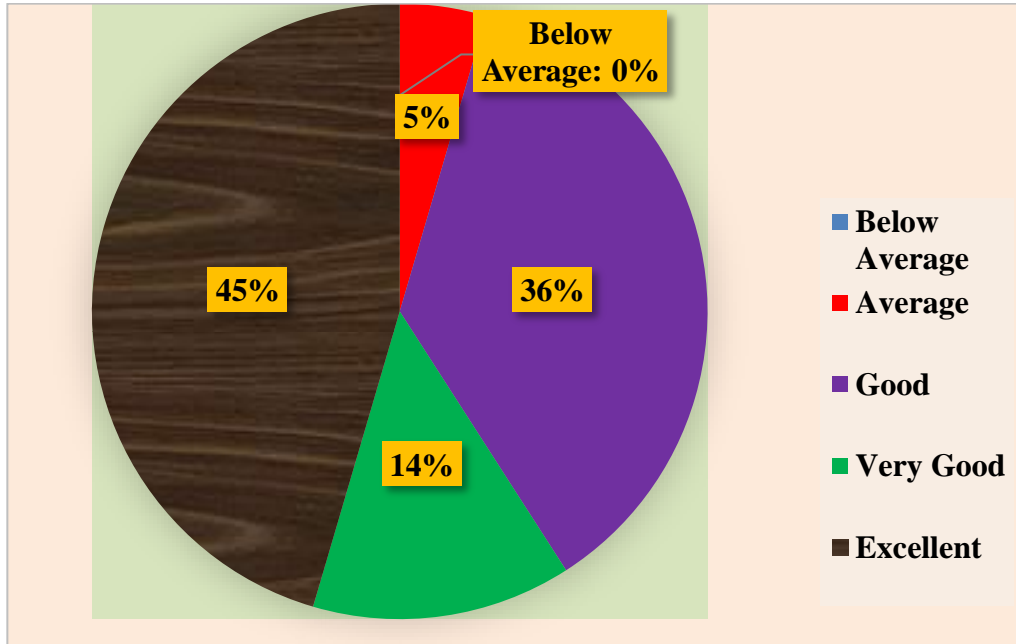
36% of teachers agreed that the structure and relevance of curriculum is very good.

#### 2. Are the electives offered in the curriculum related to technological advancements?



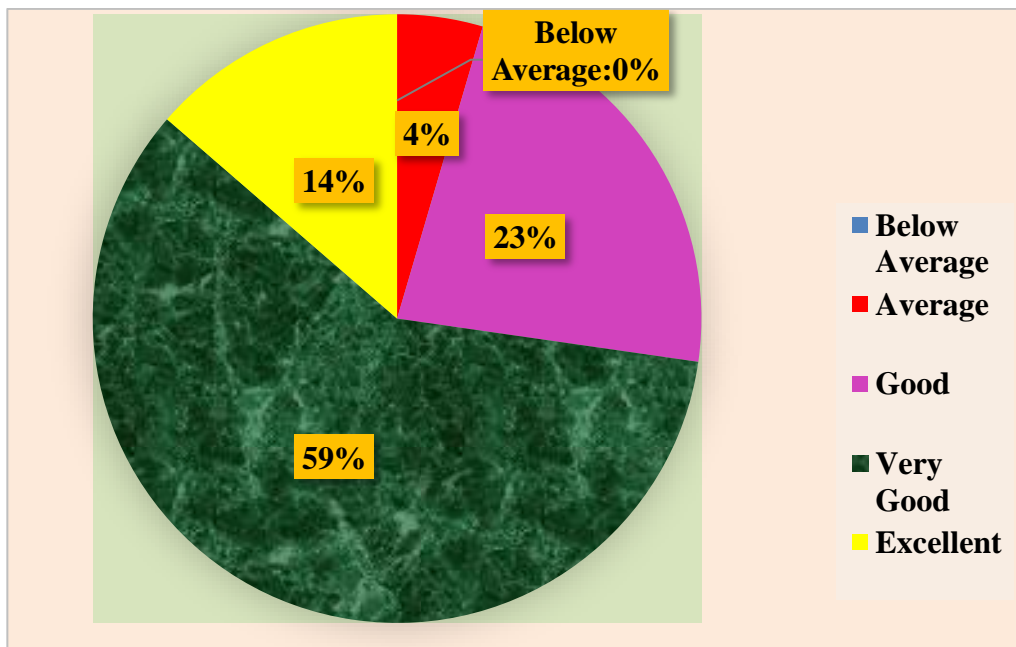
50% of Faculty expressed that the electives offered in the curriculum are related to technological advancements is very good.

### 3. How do you rate the academic flexibility in the curriculum?



It has been observed that 45% of Faculty members agreed that there is an academic flexibility in the curriculum is excellent.

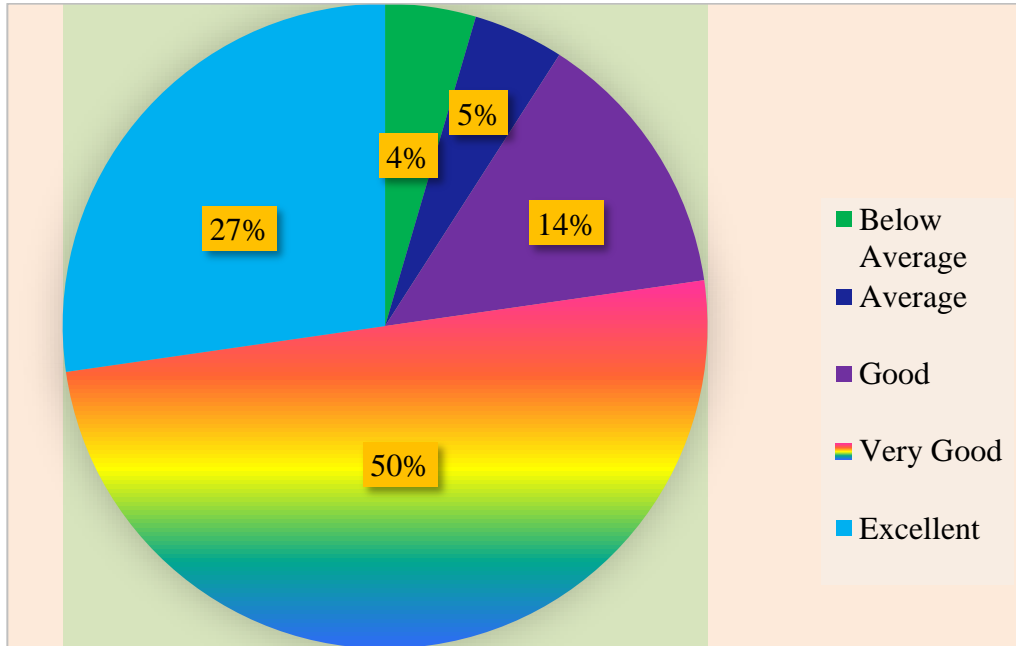
### 4. How well the curriculum caters to the industry requirements?



It has been noticed that the curriculum has framed to caters the industry requirements (about 59%). Is very good

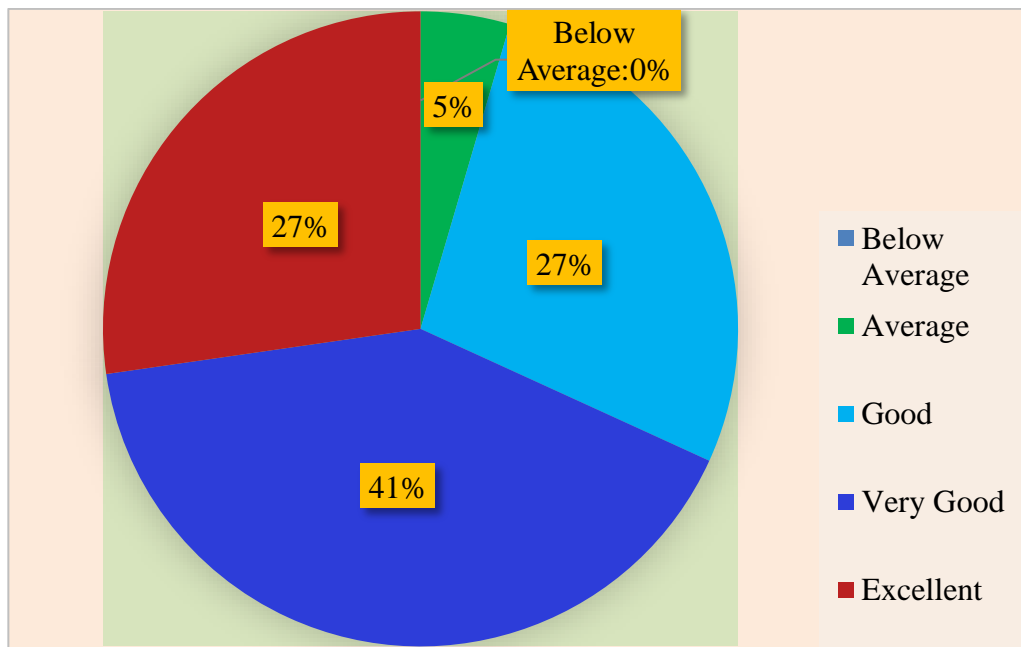


**5. Is the curriculum helpful to improve ethical values in the students?**



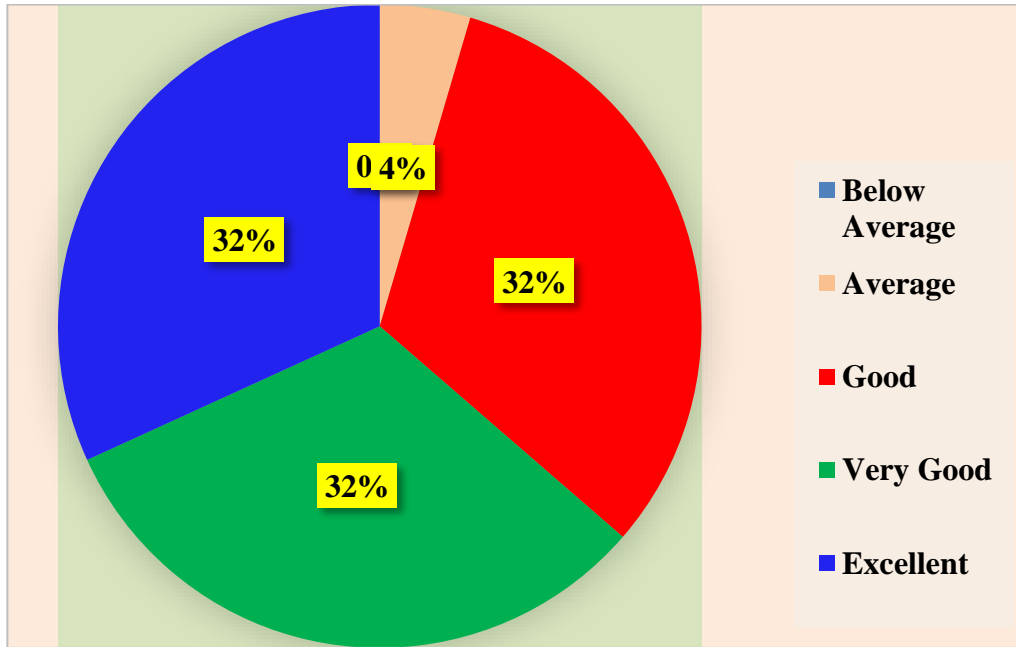
It has been observed that 50% of Faculty members agreed that curriculum is very good helpful to improve ethical values in the Students.

**6. Is the curriculum effective in improving the innovative thinking?**



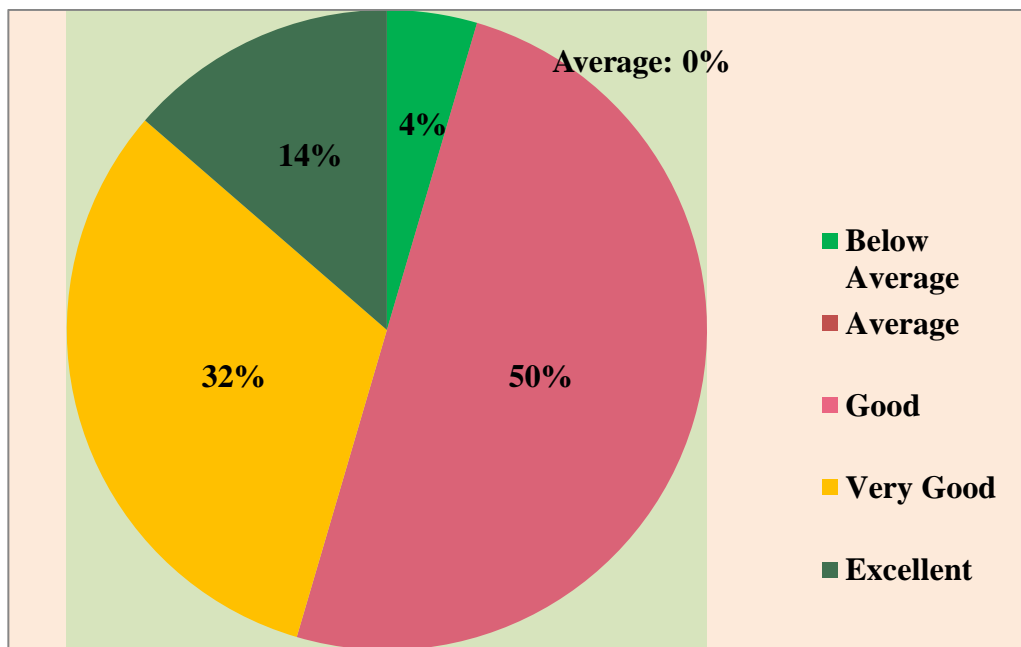
41% of Faculty has expressed that the curriculum is very good in improving the innovative thinking

**7. Do you think the prescribed curriculum leads to practical exposure regarding modern tools?**



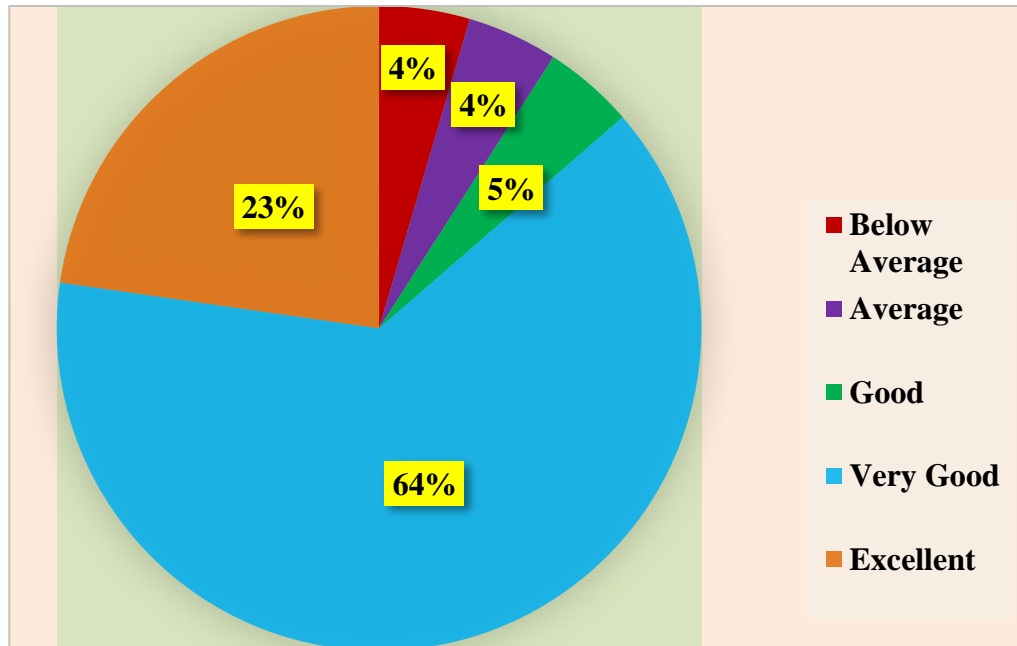
It was found that equal percentage i.e;32% of teachers agreed that the curriculum leads to practical exposure with the usage of modern tools is good, very good and excellent.

**8. How much is the curriculum able to improve teamwork abilities?**



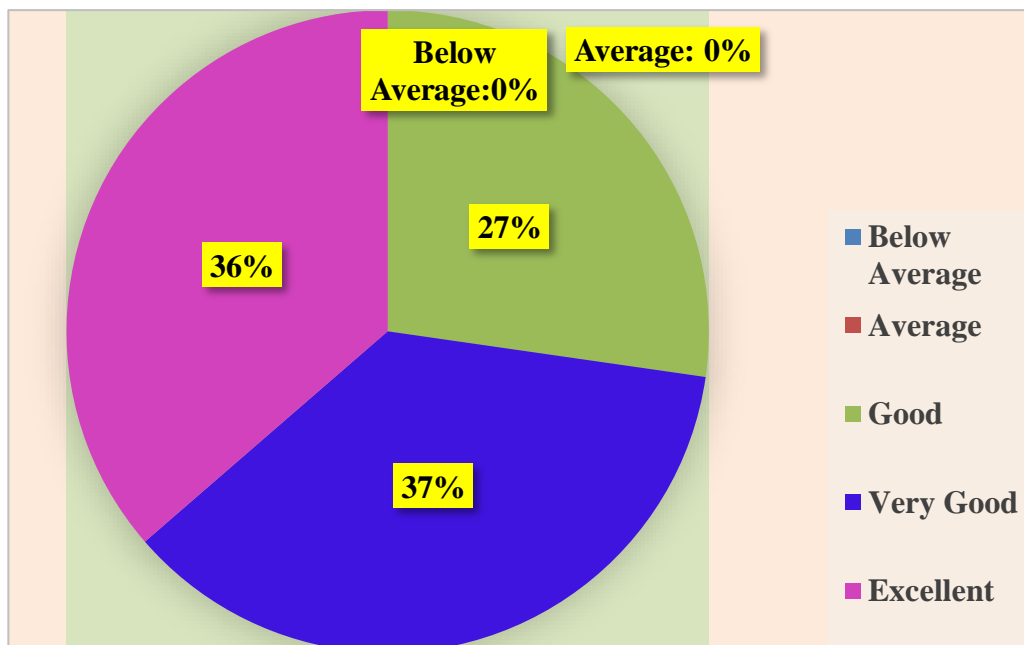
50% of Faculty has rated good that the curriculum has framed to improve team work abilities.

### 9. Rate the effectiveness of syllabus for development of Life Skills /Skill Enhancement



It has been noticed that almost 64% of teachers rated the syllabus is very good for the development of life skills.

### 10. How do you rate the syllabus effectiveness for the development of entrepreneurship?



37% of Faculty has expressed satisfaction that the syllabus is very good in developing entrepreneurship skills